

JH Rhodes Polishing Pads



ESM-U

www.jhrhodes.com

SEMICONDUCTOR POLISHING PAD - UNFILLED

ESM-U is used for polishing single crystal silicon carbide, and titanium CMP.

BENEFITS

✓ Superior flatness for titanium CMP processes

TYPICAL APPLICATIONS

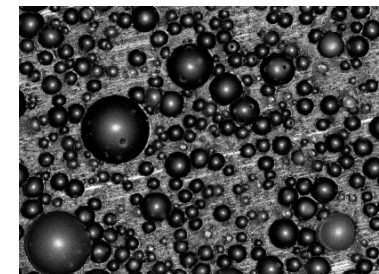
Sapphire

CMP-Titanium

Silicon Carbide Crystal

ESM-U PAD PROPERTIES (Average)

| FILLER | DENSITY [g/cm ³ (lb/ft ³)] | HARDNESS (Shore A) | COMPRESSIBILITY (%) | ELASTIC REBOUND (%) |
|--------|--|-----------------------|------------------------|---------------------------|
| None | 0.70 (44.0) | 95 | 7.5 | 93 |



Values are subject to change without notification.